

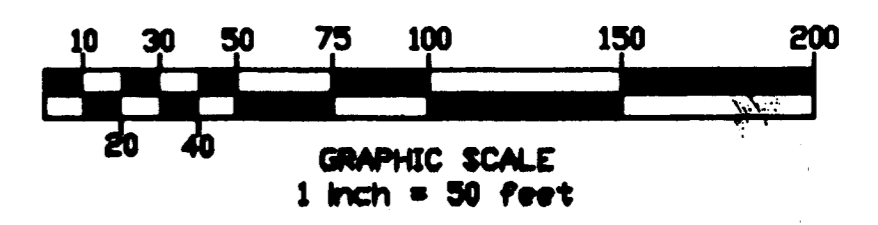
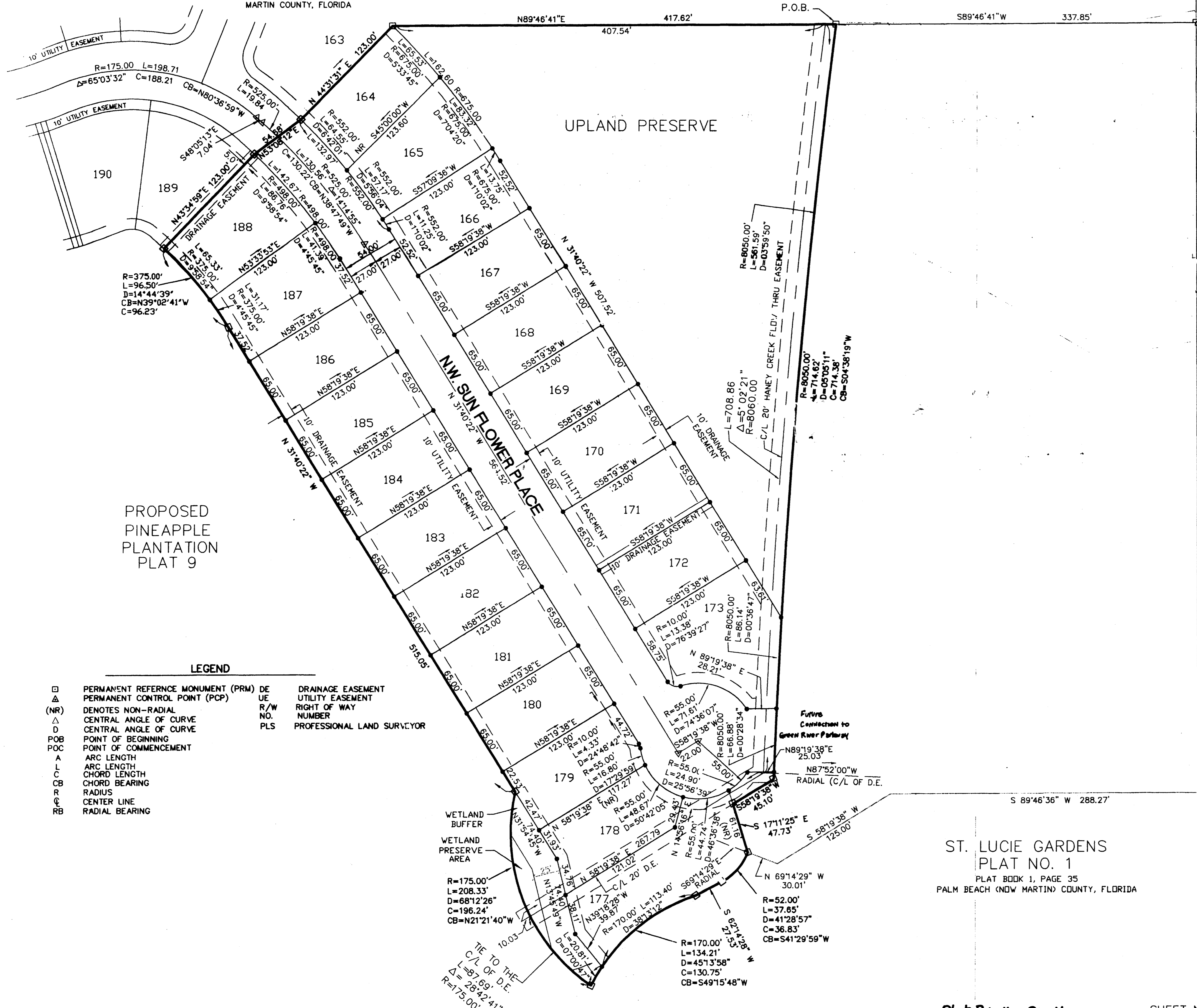
PINEAPPLE PLANTATION PLAT 7, PHASE C ADDITION

LYING IN THE CITY OF STUART
 BEING A REPLAT OF A PORTION OF SECTIONS 20 AND 29 TOWNSHIP 37 SOUTH, RANGE 41 EAST
 ST. LUCIE GARDENS PLAT NO. 1, AS RECORDED IN PLAT BOOK 1, PAGE 35 OF THE PUBLIC RECORDS OF
 ST. LUCIE (NOW MARTIN) COUNTY, FLORIDA.

20-57-41-805-000-0000.0
 SUBDIVISION PARCEL CONTROL NUMBER

PINEAPPLE PLANTATION
 PLAT 7C
 PLAT BOOK 15, PAGE 46
 MARTIN COUNTY, FLORIDA

P.O.C.
 20 21
 29 28
 N89°35'15"W
 S 00°13'20" E 267.47'
 NORTHEAST CORNER
 TOWNSHIP 37 SOUTH
 RANGE 41 EAST



PINECREST LAKES VII
 MARTIN COUNTY, FLORIDA

LEGEND

□	PERMANENT REFERENCE MONUMENT (PRM)	DE	DRAINAGE EASEMENT
△	PERMANENT CONTROL POINT (PCP)	UE	UTILITY EASEMENT
(NR)	DENOTES NON-RADIAL	R/W	RIGHT OF WAY
△	CENTRAL ANGLE OF CURVE	NO.	NUMBER
D	CENTRAL ANGLE OF CURVE	PLS	PROFESSIONAL LAND SURVEYOR
POB	POINT OF BEGINNING		
POC	POINT OF COMMENCEMENT		
A	ARC LENGTH		
L	ARC LENGTH		
C	CHORD LENGTH		
R	RADIUS		
C	CENTER LINE		
RB	RADIAL BEARING		

NOTICE: THIS PLAT AS RECORDED IN ITS GRAPHIC FORM IS THE OFFICIAL DEPICTION OF THE SUBDIVIDED LANDS DESCRIBED HEREIN AND WILL IN NO CIRCUMSTANCES BE SUBPLANTED IN AUTHORITY BY ANY OTHER GRAPHIC OF DIGITAL FORM OF THE PLAT. THERE MAY BE ADDITIONAL RESTRICTIONS THAT ARE NOT RECORDED ON THIS PLAT THAT MAY BE FOUND IN THE PUBLIC RECORDS OF THIS COUNTY.

ST. LUCIE GARDENS
 PLAT NO. 1
 PLAT BOOK 1, PAGE 35
 PALM BEACH (NOW MARTIN) COUNTY, FLORIDA

PREPARED BY
**METES AND BOUNDS
 INC**
 LICENSED BUSINESS NO. 6793
 49 S.W. FLAGLER AVENUE,
 SUITE 2A, STUART, FLORIDA, 34994
 TELEPHONE (772) 221-9093
 DANIEL CHRISTIAN,
 PROFESSIONAL SURVEYOR AND MAPPER
 FLORIDA REGISTRATION # 4227